



SPA INNOVATION

THE PREMIUM SERIES BY STRONG SPAS



The innovation that put Strong Spas on the map. Engineered for strength and thermal efficiency, the Premium line features our patented dual-walled resin DURA-LAST® Cabinet, patented DURA-SHIELD® HardCover and ingenious, integrated foldaway step & towel holder feature. Simply legendary!



POWERFUL
& LUXURIOUS



INNOVATIVE
ENGINEERING

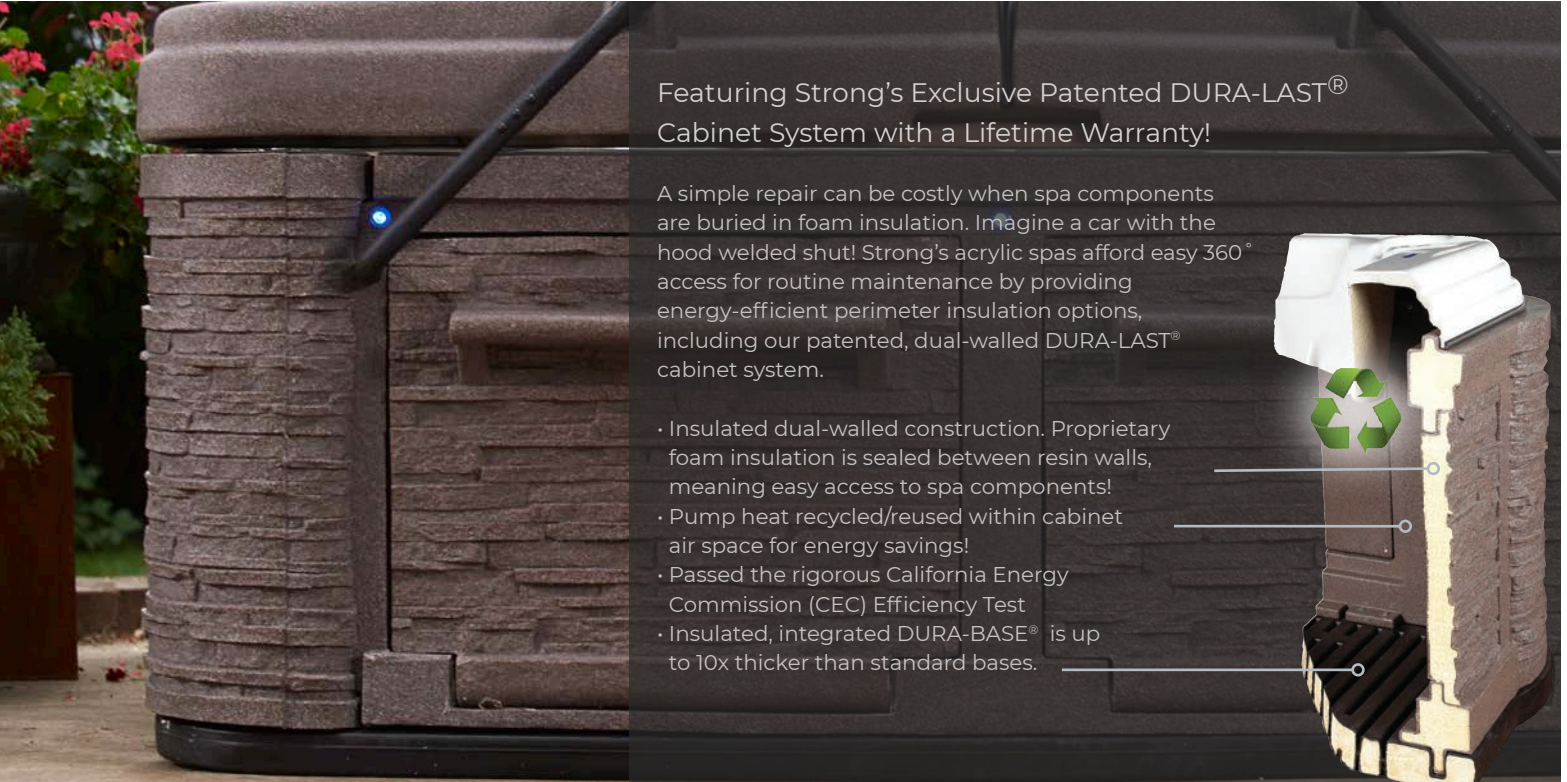


HAND-BUILT
IN THE USA

OFFERED IN LOUNGER AND NON-LOUNGER MODELS

Premium Series Models are available with or without our patented **DURA-SHIELD® HardCover**.

PREMIUM SERIES



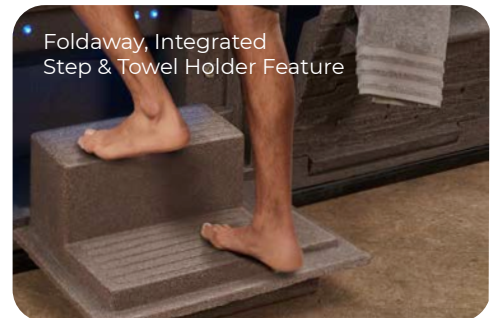
Featuring Strong's Exclusive Patented DURA-LAST® Cabinet System with a Lifetime Warranty!

A simple repair can be costly when spa components are buried in foam insulation. Imagine a car with the hood welded shut! Strong's acrylic spas afford easy 360° access for routine maintenance by providing energy-efficient perimeter insulation options, including our patented, dual-walled DURA-LAST® cabinet system.

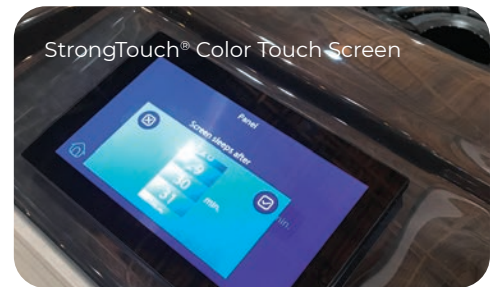
- Insulated dual-walled construction. Proprietary foam insulation is sealed between resin walls, meaning easy access to spa components!
- Pump heat recycled/reused within cabinet air space for energy savings!
- Passed the rigorous California Energy Commission (CEC) Efficiency Test
- Insulated, integrated DURA-BASE® is up to 10x thicker than standard bases.



PREMIUM SERIES



Foldaway, Integrated Step & Towel Holder Feature

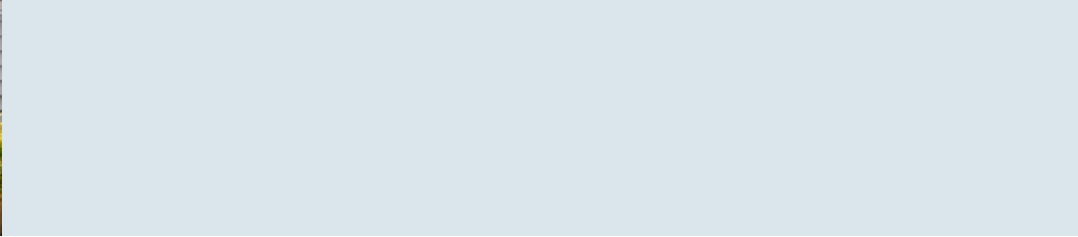


StrongTouch® Color Touch Screen



Rollover Neck/Shoulder Jets

Model / Jets	Madrid 60-Jet	Vienna 60-Jet
Seating	Lounger / up to 6	Non- Lounger / up to 6
Spa Dim. in/cm.	91x91x36 / 231x231x102	91x91x36 / 231x231x102
Volume	400 USG / 1514 L	400 USG / 1514 L
Ozonator	Included	Included
Lighting	2 LED Water Columns + LED Waterfall + Cabinet LEDs + LED Controls + Underwater LED	2 LED Water Columns + LED Waterfall + Cabinet LEDs + LED Controls + Underwater LED
Pump / Electrical	2 x 5BHP + Circ Pump + Diverters / 240V	2 x 5BHP + Circ Pump + Diverters / 240V
Heater	4kw SS All-Weather	4kw SS All-Weather
Unique Features	DURA-LAST Dual-Walled Cabinet Foldout Step/Towel Holder	DURA-LAST Dual-Walled Cabinet Foldout Step/Towel Holder
Cover	Vinyl Soft Cover included	Vinyl Soft Cover included
Options:	<ul style="list-style-type: none"> • DURA-SHIELD HardCover w/ Assist • Bluetooth Stereo 	<ul style="list-style-type: none"> • WIFI Module • UV/O³ Sanitation System



DURA-LAST®

- The first spa cabinet with a Lifetime Warranty
- Virtually indestructible cabinet
- Provides easy access to spa components
- Patented dual-walled design
- Energy-efficient

PREMIUM SERIES OPTIONAL FEATURES



Optional DURA-SHIELD® HardCover

Simple. Quick. Easy.

- Built-in ULTRASTRONG® CoverLift system
- Choose CoverLift Assist or Fully-Automated
- Patented DURA-SHIELD Hardcover is as easy to open as a car door

Limited Lifetime Warranty

- Pre-installed
- Supports 1000+ lbs. of snowload or debris
- Enjoy convenience every day and money savings over time in never having to replace the cover

Safety

- Lockable
- Easy for an adult to open, yet deters unwanted child entry

Energy Efficient

- Proprietary foam insulation is encapsulated within the dual-walled DURA-SHIELD HardCover
- Keeps your spa hot and ready to use without wasting energy
- Maintains its same R-value for many years

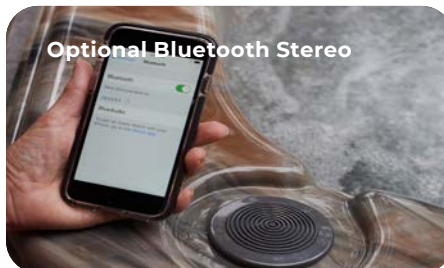


Optional WiFi App

82°
Current
Temp

93°
Set
Temp

74°
Clear



Optional Bluetooth Stereo



Optional UV/O³ Sanitation

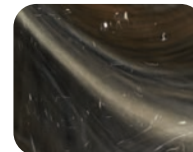
Acrylic Colors



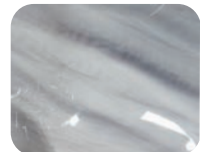
Sterling Silver



Tuscan Sun



Midnight Canyon



Storm Clouds

Resin Colors



Cobblestone



Millstone



Gray Granite



strongspas.com/durasport

570-275-2700

Made in the USA



BRO/P1-2022